

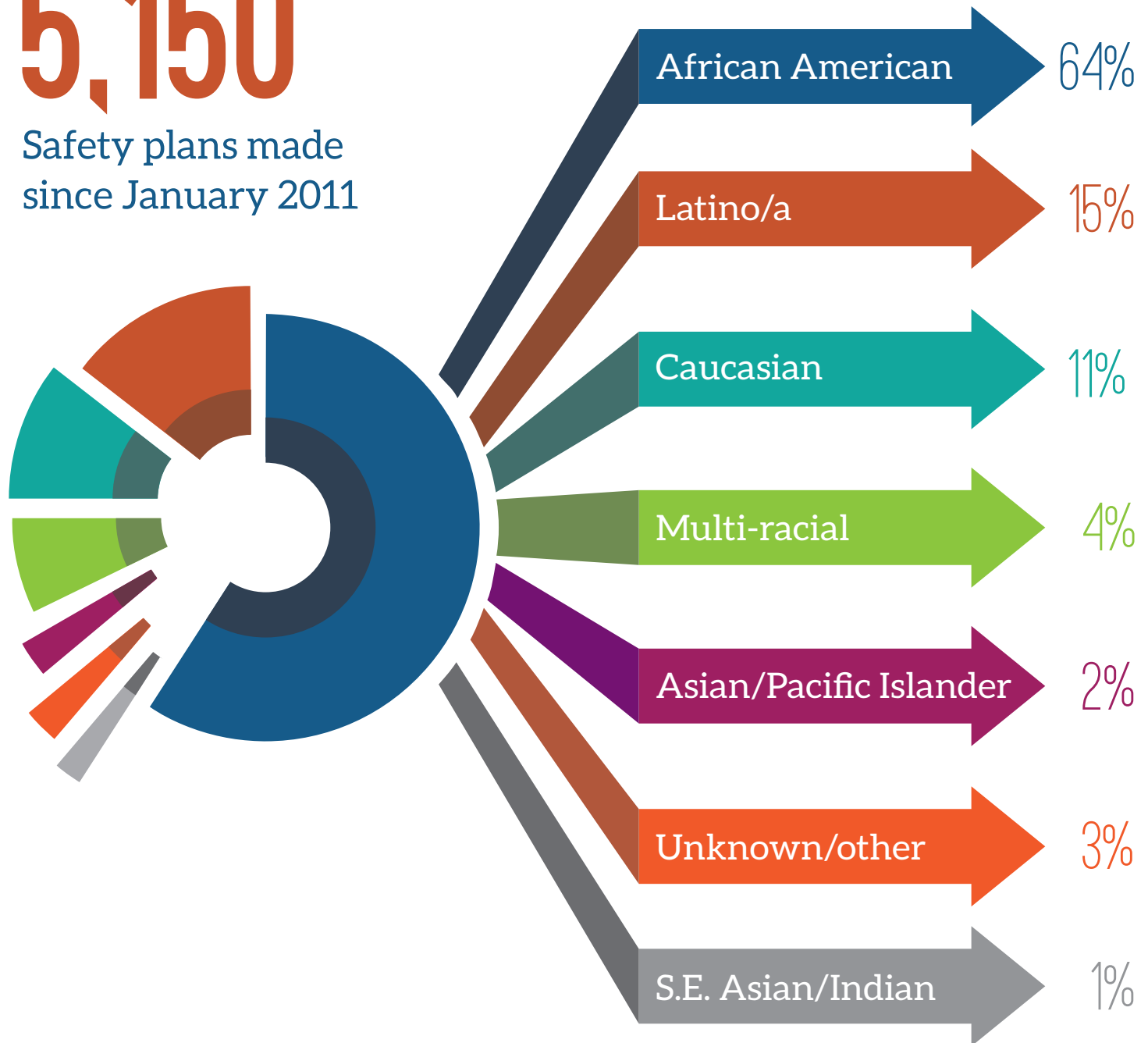
# YOUNG PEOPLE AT RISK RACE ETHNICITY

January 2011 to December 2018

A review of youth identified in Alameda County as at risk for or already involved in commercial sexual exploitation who were referred to SafetyNet<sup>1</sup>

# 5,150<sup>2</sup>

Safety plans made since January 2011



1. Based on a review of 851 youth, this data is gathered on a daily basis and is constantly changing to reflect the current reality of this population. For more information, go to [www.heatwatch.org](http://www.heatwatch.org).  
 \* These risk factors percentages are derived from total youth numbers. It should also be noted that drug use history is counted if we ever learned of them using any type of illegal drug. Additionally, chronic absenteeism includes children who chronically miss school, but may not legally be truant as defined as W&I 602b (truants).  
 2. This number does not reflect the number of individual youth discussed.